



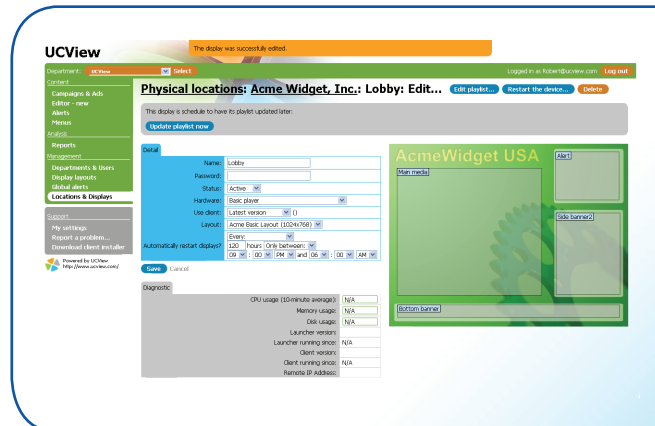
The ViewEdge® 10 Digital Signage Media Server is our entry-level, fully integrated hardware and software solution for providing web-based management and media distribution. With complete control of up to one hundred media players, the ViewEdge® 10 is perfect for mid-size single location or several smaller locations.

One Digital Signage Appliance seamlessly distributes: Live TV, web pages, Flash media, PowerPoint presentations, RSS feeds and multiple video, image and audio formats.

With no software to install or network modifications to perform, setting up a UCView Digital Signage Media Server is simple and hassle free.

- One ViewEdge® 10 Appliance can control as many as 10 media players, operating anywhere in the world.
- Self-contained hardware and software solution that minimizes maintenance and serpentine installation/administration issues.
- Compatible with Intranet, Internet and V-LAN connections.
- Web-based administration: Manage campaigns, content, layouts and displays from any web-enabled device, anywhere in the world.
- Cluster multiple Server Appliances to increase capacity and availability. Installing additional units is as simple as installing the first one.
- Schedule content delivery on the fly or weeks in advance.
- Unlike software-only solutions, the UCView Digital Signage Network increases system performance by centralizing the process and management to multi-user enterprise environments.
- Updates and fixes are delivered automatically with no additional administration.

The POWERFUL,  
STRAIGHTFORWARD  
and  
COST EFFECTIVE  
ENTERPRISE-CLASS  
DIGITAL SIGNAGE  
SOLUTION



# UCView ViewEdge® 10 Digital Signage Media Server

## Hardware Specifications

- CPU: 1.5 GHz Intel Celeron Desktop Processor
- Hard drive: One 250GB SATA
- Chipset: 82852GM
- System Bus: 400MHz
- Memory: 1GB DDR2 SDRAM
- Graphics: VGA
- Network: 2 LAN (10/100)
- Interface: Web and Console
- Dimensions: 1 RU, 11" X 10" X 1"

## Hardware Features

- Connections:
  - 1 SVGA
  - 1 Ethernet 10/100
  - 4 USB
  - 2 PS/2 (Keyboard/Mouse)
  - Stereo audio I/O
- Power Requirements:
  - AC 100-200 Volt
  - 200 W

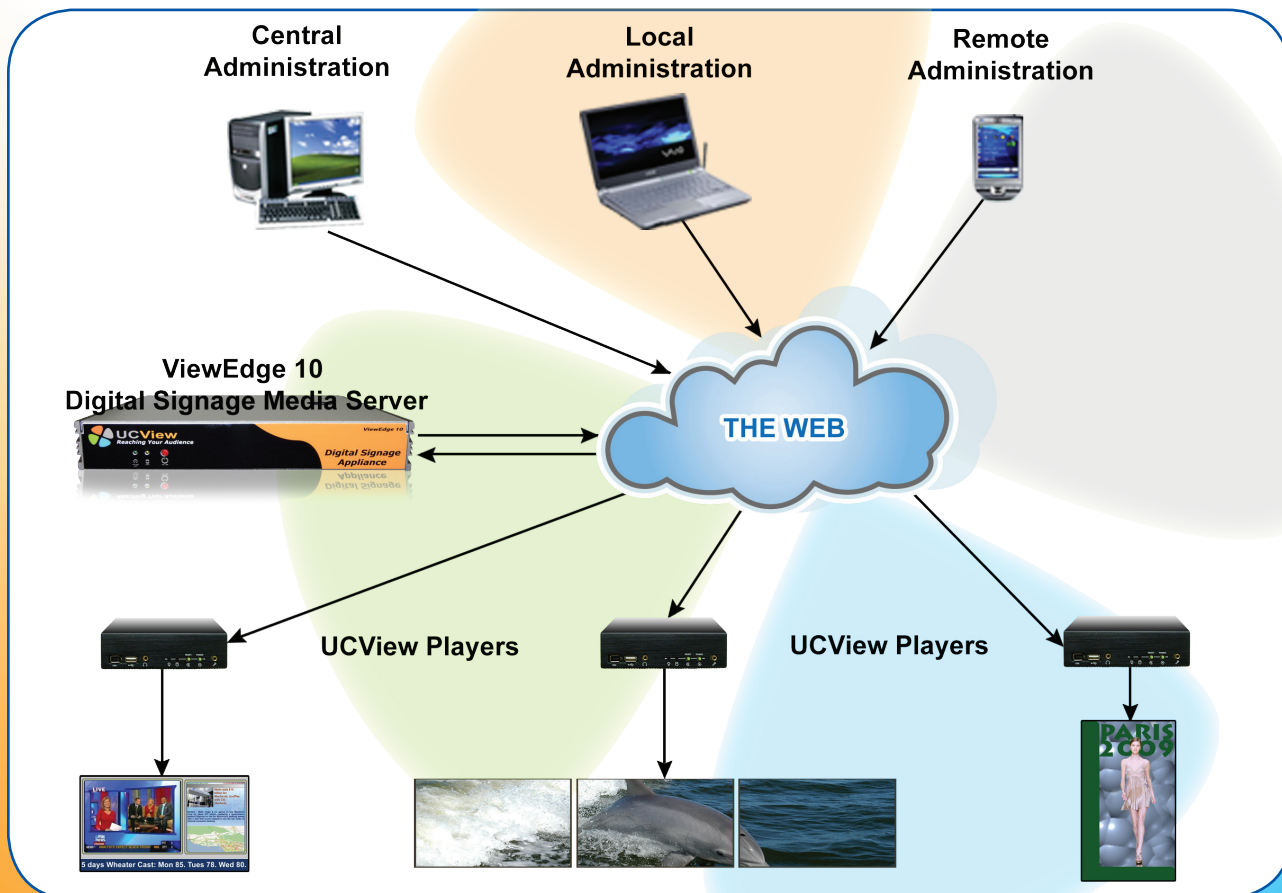
## System Features

- Administration:
  - Web-based interface
  - Console for IP management
  - User account administration
  - Reports and statistics
  - Remote display management
  - Display failure notification
  - Secure remote administration
  - Full user security module
- End User/Advertisers:
  - Web-based interface
  - Full campaign and ad management
  - Reports and statistics

## Support

The UCView Updates Subscription provides peace of mind while installing and running our Digital Signage Solutions, plus additional training and design support. Updates Subscription is included free of charge for the first year of your contract and is renewable thereafter for a small fee. The program includes:

- Standard technical support
- Software updates
- Appliance monitoring
- Online training
- System and layout design



Specifications