



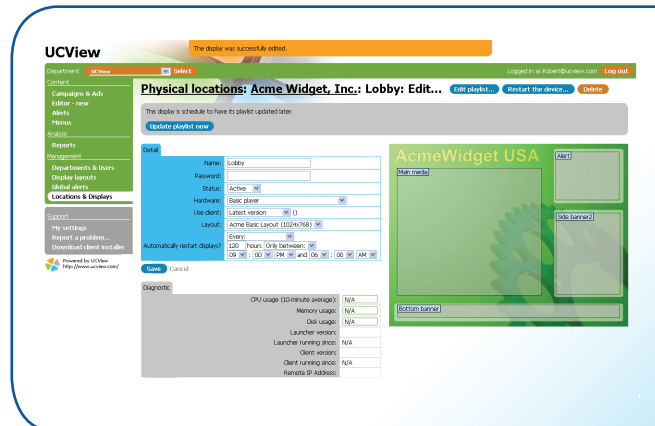
The POWERFUL,
STRAIGHTFORWARD
and
COST EFFECTIVE
ENTERPRISE-CLASS
DIGITAL SIGNAGE
SOLUTION

The ViewEdge® 500 Digital Signage Appliance is our most powerful, fully integrated hardware and software solution for providing web-based management and media distribution. With complete control of up to five hundred media players, the ViewEdge® 500 is an ideal choice for multi-location signage networks controlling any installation.

One Digital Signage Appliance seamlessly distributes: Live TV, web pages, Flash media, PowerPoint presentations, RSS feeds and multiple video, image and audio formats.

With no software to install or network modifications to perform, setting up a UCView Digital Signage Appliance is simple and hassle free.

- One ViewEdge® 500 Appliance can control as many as 500 media players, operating anywhere in the world.
- Self-contained hardware and software solution that minimizes maintenance and serpentine installation/administration issues.
- Compatible with Intranet, Internet and V-LAN connections.
- Web-based administration: Manage campaigns, content, layouts and displays from any web-enabled device, anywhere in the world.
- Cluster multiple Server Appliances to increase capacity and availability. Installing additional units is as simple as installing the first one.
- Schedule content delivery on the fly or weeks in advance.
- Unlike software-only solutions, the UCView Digital Signage Network increases system performance by centralizing the process and management to multi-user enterprise environments.
- Updates and fixes are delivered automatically with no additional administration.



UCView ViewEdge® 500 Digital Signage Media Server

Hardware Specifications

- CPU: 2.66 GHz Intel Pentium Core 2 Duo Desktop Processor E7300
- Hard drive: Two 500GB ATA with disk mirroring
- Chipset: LGA 775
- System Bus: 1066MHz
- Memory: 4GB DDR2 SDRAM
- Graphics: VGA
- Network: 2 LAN (10/100/1000)
- Interface: Web and Console
- Dimensions: 1 RU, 17" X 11" X 1"

Hardware Features

- Connections:
 - 2 SVGA
 - 1 Ethernet 10/100/1000
 - 2 USB
 - 2 PS/2 (Keyboard/Mouse)
- Power Requirements:
 - AC 100-200 Volt
 - 250 W

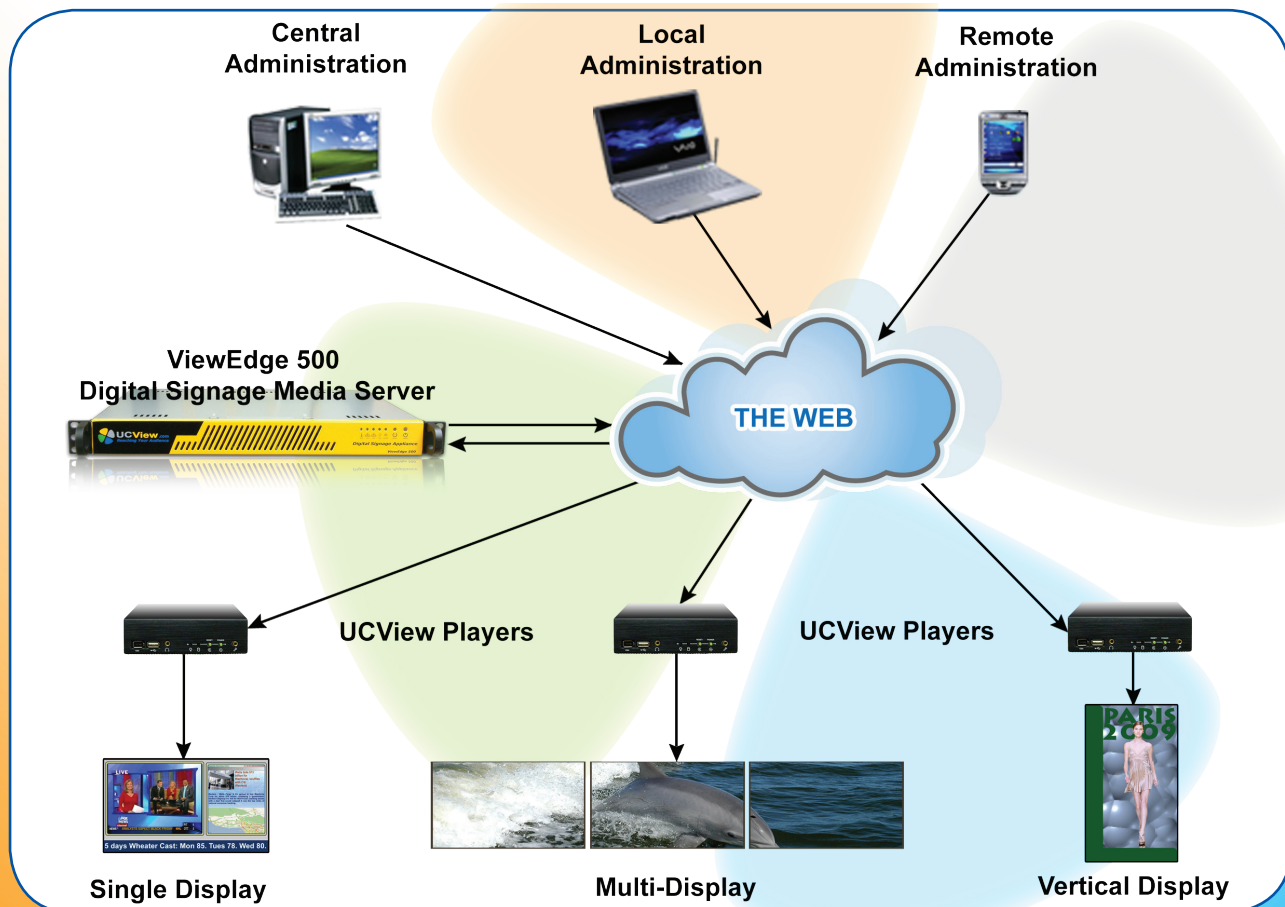
System Features

- Administration:
 - Web-based interface
 - Console for IP management
 - User account administration
 - Reports and statistics
 - Remote display management
 - Display failure notification
 - Secure remote administration
 - Full user security module
- End User/Advertisers:
 - Web-based interface
 - Full campaign and ad management
 - Reports and statistics

Support

The UCView Updates Subscription provides peace of mind while installing and running our Digital Signage Solutions, along with additional training and design support. Updates Subscription is included free of charge for the first year of your contract and is renewable thereafter for a small fee. The program includes:

- Standard technical support
- Software updates
- Appliance monitoring
- Online training
- System and layout design



Specifications