

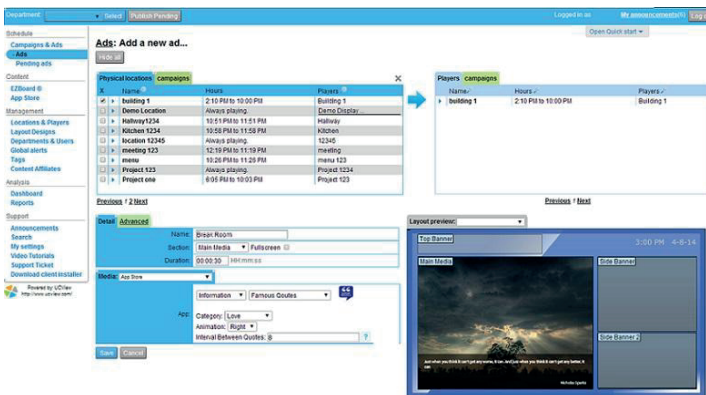


The ViewEdge 10 digital signage media server is our entry-level, fully integrated hardware and software solution for providing web-based management and media distribution. With complete control of up to 20 media players, the ViewEdge 10 is perfect for a mid-sized single location or several smaller locations.

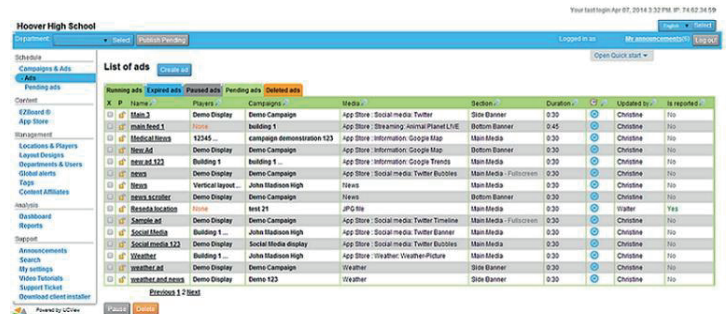
One digital signage appliance can seamlessly distribute: Live TV, web pages, Flash media, PowerPoint presentations, RSS feeds and multiple video, images, and audio formats.

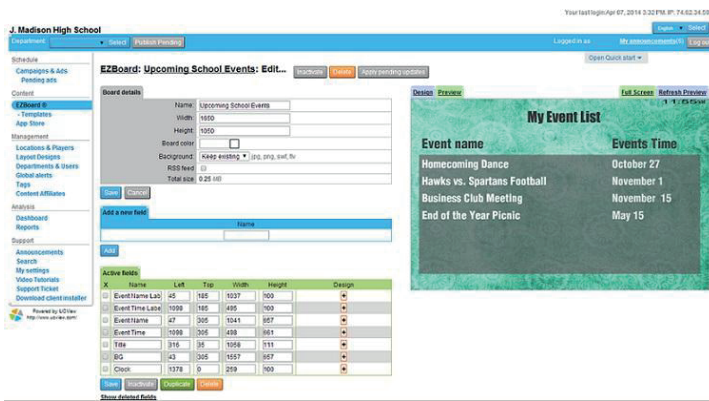
With no software to install or network modifications to perform, setting up a UCView Digital Signage Media Server is simple and hassle-free.

- One ViewEdge 10 appliance can control as many as 20 media players, operating throughout the world.
- Self-contained hardware and software solution that minimizes maintenance and complicated installation/administration issues.
- Compatible with Internet, and W-LAN connections.



- Web-based administration: Manage campaigns, content, layouts and displays using any web-enabled device from anywhere in the world.
- Cluster multiple Server Appliances to increase capacity and availability. Installing additional units is as simple as installing the first one.
- Schedule content delivery on the fly or weeks in advance.





- Unlike software-only solutions, the UCView Digital Signage Network increases system performance by centralizing the process and management to multi-user enterprise environments.
- Updates and fixes are delivered automatically with no additional administration.

Specifications 1

Hardware Specifications:

- CPU: 2.5GHz Intel Celeron Desktop Processor
- Hard Drive: 120GB SATA Hard Drive
- Chipset: LGA1155
- Memory: 2GB DDR2 SDRAM
- Graphics: VGA
- Network: 2 LAN (10/100/1000)
- Interface: Web and Console
- Dimensions: 11 inches 1U
Size: 11"x10"

Hardware Features:

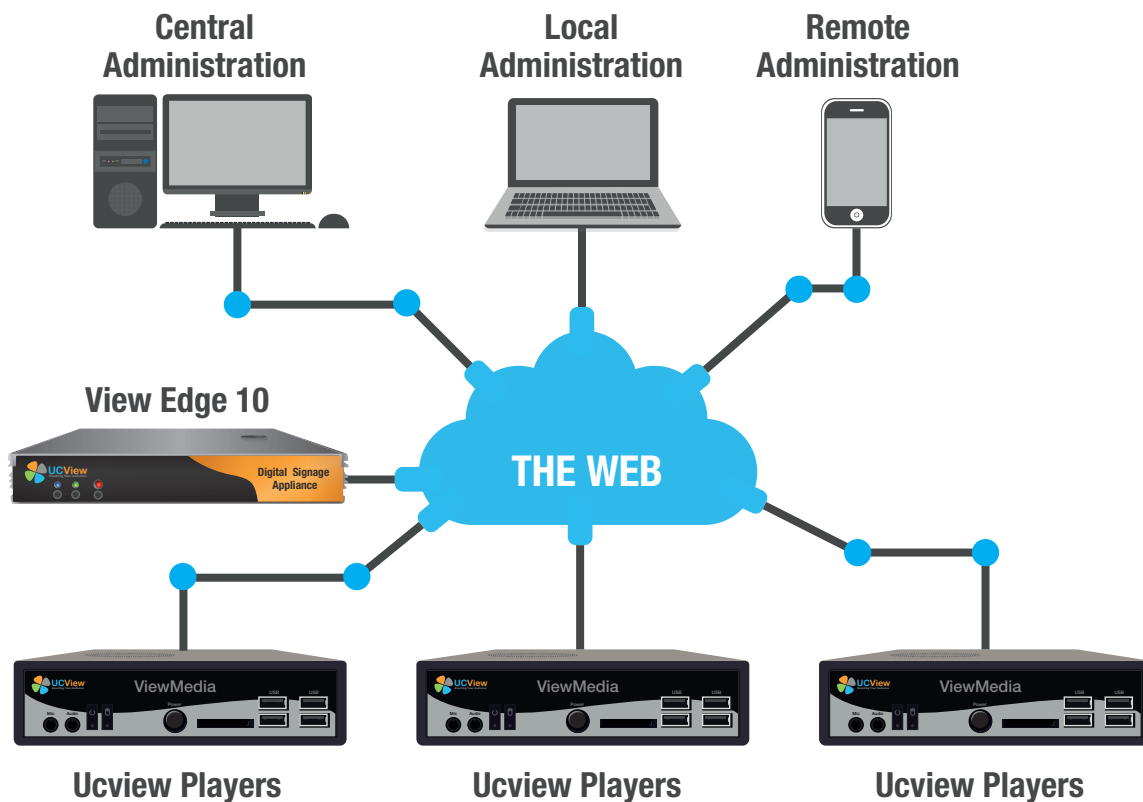
- Connections:
 - 1 VGA Connector
 - 1 Ethernet (10/100/1000)
 - 2 USB
 - 2 PS/2 (Keyboard/Mouse)
- Power Requirements:
 - AC 100-200 Volt
 - 150W

System Features:

- Administration:
 - Web based interface console for IP management
 - Console for IP management
 - User account administration
 - Reports and statistics
 - Remote display management
 - Display failure notification
 - Secure remote administration
 - Full-user security module

End Users/Advertisers:

- Web-based interface
- Fullcampaign and ad management
- Reports and statistics



UCView
Reaching Your Audience

18425 Napa St
Northridge, CA 91325

Tel: 1-818-772-8255

Toll Free: 1-877-828-4399

Fax: 1-818-772-7901

Email: sales@ucview.com
leah@ucview.com