



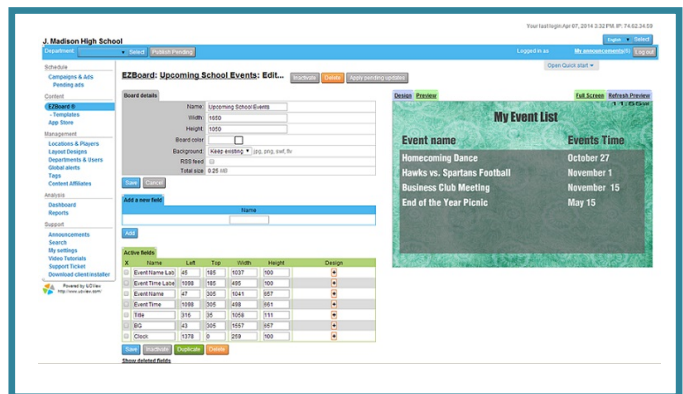
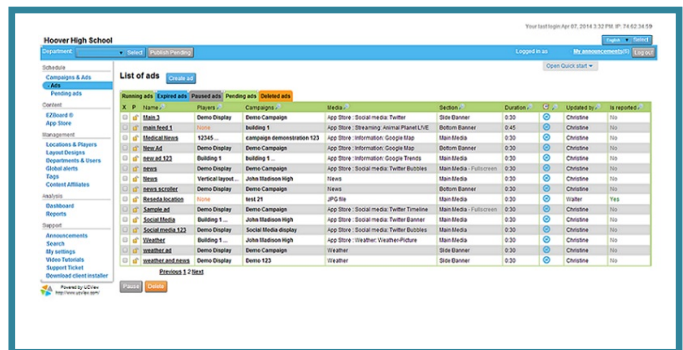
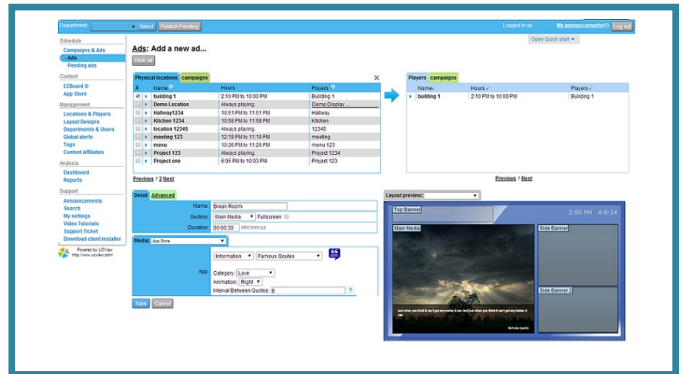
ViewEdge 10

The ViewEdge 10 digital signage media server is our entry-level, fully integrated hardware and software solution for providing web-based management and media distribution. With complete control of up to 20 media players, the ViewEdge 10 is perfect for a mid-sized single location or several smaller locations.

One digital signage appliance can seamlessly distribute: Live TV, web pages, Flash media, PowerPoint presentations, RSS feeds and multiple video, images, and audio formats.

With no software to install or network modifications to perform, setting up a UCView Digital Signage Media Server is simple and hassle-free.

- One ViewEdge 10 appliance can control as many as 20 media players, operating throughout the world.
- Self-contained hardware and software solution that minimizes maintenance and complicated installation/administration issues.
- Compatible with Intranet, Internet, and V-LAN connections.
- Web-based administration: Manage campaigns, content, layouts and displays using any web-enabled device from anywhere in the world.
- Cluster multiple Server Appliances to increase capacity and availability. Installing additional units is as simple as installing the first one.
- Schedule content delivery on the fly or weeks in advance.
- Unlike software-only solutions, the UCView Digital Signage Network increases system performance by centralizing the process and management to multi-user enterprise environments.
- Updates and fixes are delivered automatically with no additional administration.



ViewEdge 10 - Specifications

Hardware Specifications:

- CPU: 2.5GHz Intel Celeron Desktop Processor
- Hard Drive: 500GB SATA Hard Drive
- Chipset: LGA1155
- Memory: 2GB DDR3
- Graphics: VGA
- Network: 2 LAN (10/100/1000)
- Interface: Web and Console
- Dimensions: 11 inches 1U
Size: 11" x 10"

Hardware Features:

- **Connections:**
 - 1 VGA Connector
 - 1 Ethernet (10/100/1000)
 - 2 USB
 - 2 PS/2 (Keyboard/Mouse)
- **Power Requirements:**
 - AC 100-200 Volt
 - 150 W

System Features:

- **Administration:**
 - Web based interface console for IP management
 - Console for IP management
 - User account administration
 - Reports and statistics
 - Remote display management
 - Display failure notification
 - Secure remote administration
 - Full-user security module
- **End Users/Advertisers:**
 - Web-based interface
 - Full campaign and ad management
 - Reports and statistics

