



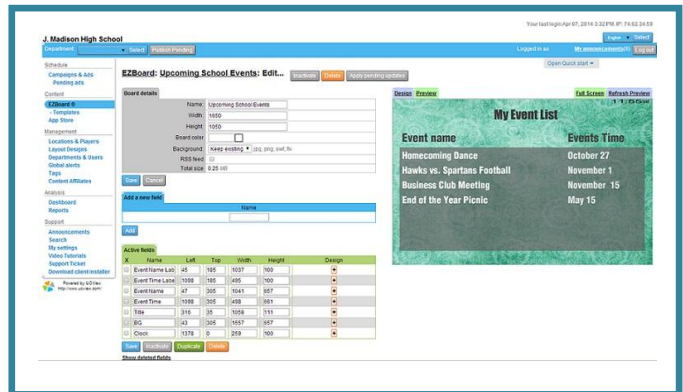
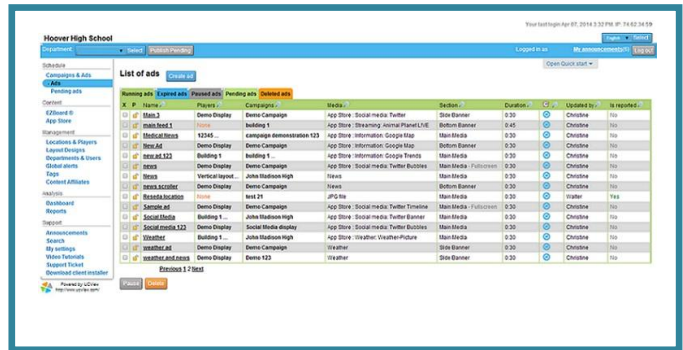
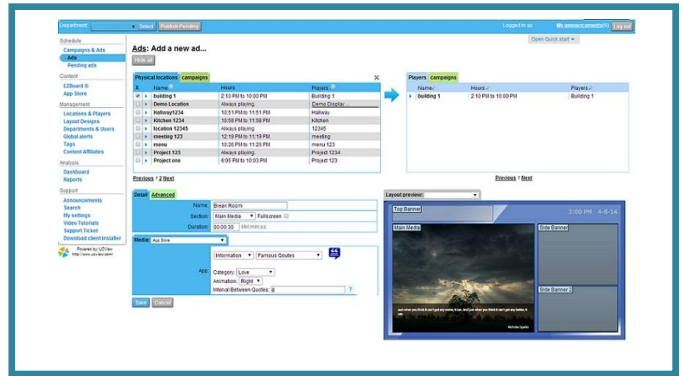
ViewEdge 1000

The ViewEdge 1000 media server is a high-performance, extensible and a fully scalable digital signage server. This scalable server architecture can help keep your digital signage customers and staff happy while leaving the door open for future growth and expansion of your network, fully integrated hardware and software solution for providing web-based management and media distribution.

One Digital Signage Appliance can seamlessly distribute: Live TV, web pages, Flash media, PowerPoint presentations, RSS feeds and multiple video, image and audio formats.

With no software to install or network modifications to perform, setting up a UCView Digital Signage Media Server is simple and hassle-free.

- One ViewEdge 1000 appliance can control as many as 1000 media players, operating anywhere in the world.
- Self-contained hardware and software solution that minimizes maintenance and complicated installation/administration issues.
- Compatible with Intranet, Internet, and V-LAN connections.
- Web-based administration: Manage campaigns, content, layouts and displays using any web-enabled device from anywhere in the world.
- Cluster multiple Server Appliances to increase capacity and availability. Installing additional units is as simple as installing the first one.
- Schedule content delivery on the fly or weeks in advance.
- Unlike software-only solutions, the UCView Digital Signage Network increases system performance by centralizing the process and management to multi-user enterprise environments.
- Updates and fixes are delivered automatically with no additional administration.



ViewEdge 1000 - Specifications

Hardware Specifications:

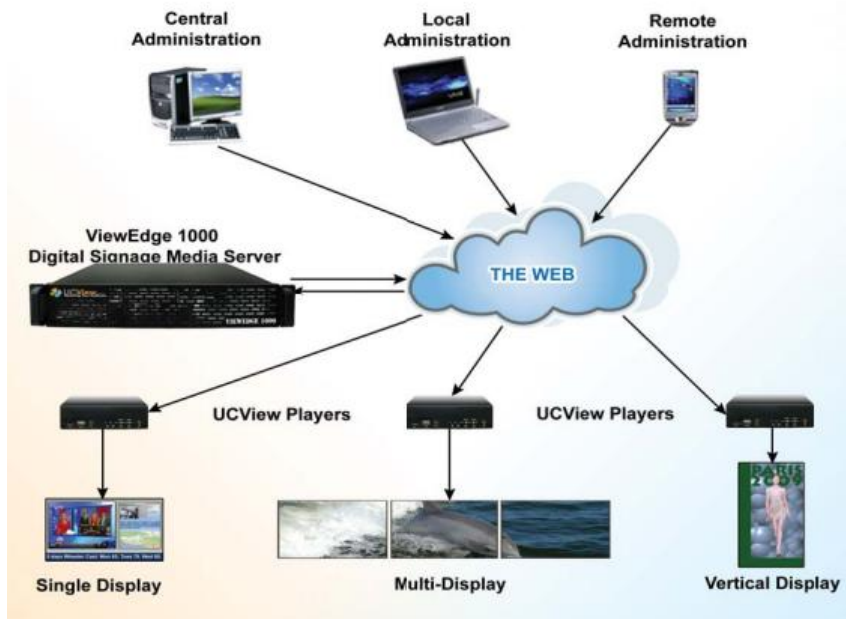
- CPU: 3.3 GHz Intel Processor
- Hard Drive: Two 1TB ATA with disk mirroring
- Chipset: LGA1155
- Memory: 8GB RAM DDR3 SDRAM
- Graphics: VGA
- Network: 2 LAN (10/100/1000)
- Interface: Web and Console
- Dimensions: 2 RU, 17" x 11" x 1"

Hardware Features:

- **Connections:**
 - 1 VGA Connector
 - 1 Ethernet 10/100/1000
 - 2 USB
 - 2 PS/2 (Keyboard/Mouse)
- **Power Requirements:**
 - AC 100-200 Volt
 - 500 W

System Features:

- **Administration:**
 - Web based interface console for IP management
 - Console for IP management
 - User account administration
 - Reports and statistics
 - Remote display management
 - Display failure notification
 - Secure remote administration
 - Full-user security module
- **End Users/Advertisers:**
 - Web-based interface
 - Full campaign and ad management
 - Reports and statistics



UCView, Inc.

18425 Napa Street
Northridge, CA 91325
Office: 818-772-8255
Fax: 818-772-7901
www.ucview.com