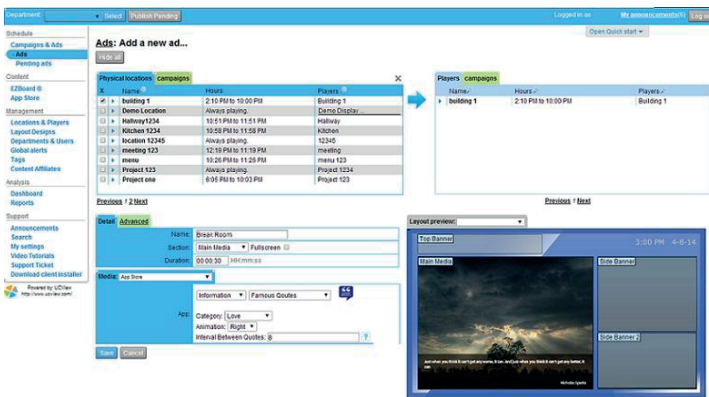


The ViewEdge 500 Digital Signage Appliance is our most powerful, fully integrated hardware and software solution for providing web-based management and media distribution. With complete control of up to five hundred media players, the ViewEdge 500 is an ideal choice for multi-location signage networks controlling and installation.

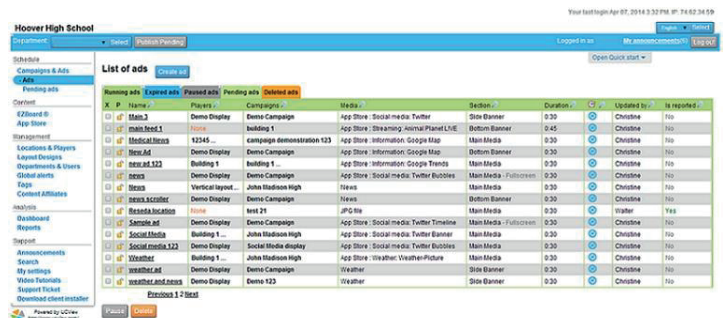
One Digital Signage Appliance can seamlessly distribute: Live TV, web pages, Flash media, PowerPoint presentations, RSS feeds and multiple video, image and audio formats.

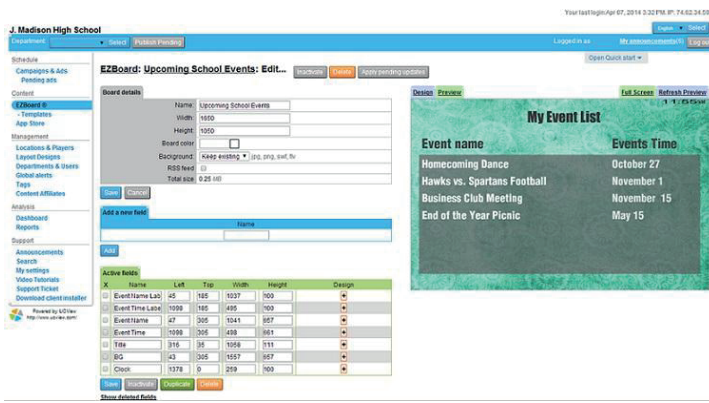
With no software to install or network modifications to perform, setting up a UCView Digital Signage Media Server is simple and hassle-free.

- One ViewEdge 500 appliance can control as many as 750 media players, operating anywhere in the world
- Self-contained hardware and software solution that minimizes maintenance and complicated installation/administration issues.
- Compatible with Internet, and W-LAN connections.



- Web-based administration: Manage campaigns, content, layouts and displays using any web-enabled device from anywhere in the world.
- Cluster multiple Server Appliances to increase capacity and availability. Installing additional units is as simple as installing the first one.
- Schedule content delivery on the fly or weeks in advance.





- Unlike software-only solutions, the UCView Digital Signage Network increases system performance by centralizing the process and management to multi-user enterprise environments.
- Updates and fixes are delivered automatically with no additional administration.

Specifications 1

Hardware Specifications:

- CPU: 3.3GHz Intel Xeon Processor
- Hard Drive: 2 x 1TB Hard Drive
- Chipset: LGA1155
- Memory: 8GB DDR3
- Graphics: VGA
- Network: 2 LAN (10/100/1000)
- Interface: Web and Console
- Dimensions: 1 RU, 17" x 11" x 1"

Hardware Features:

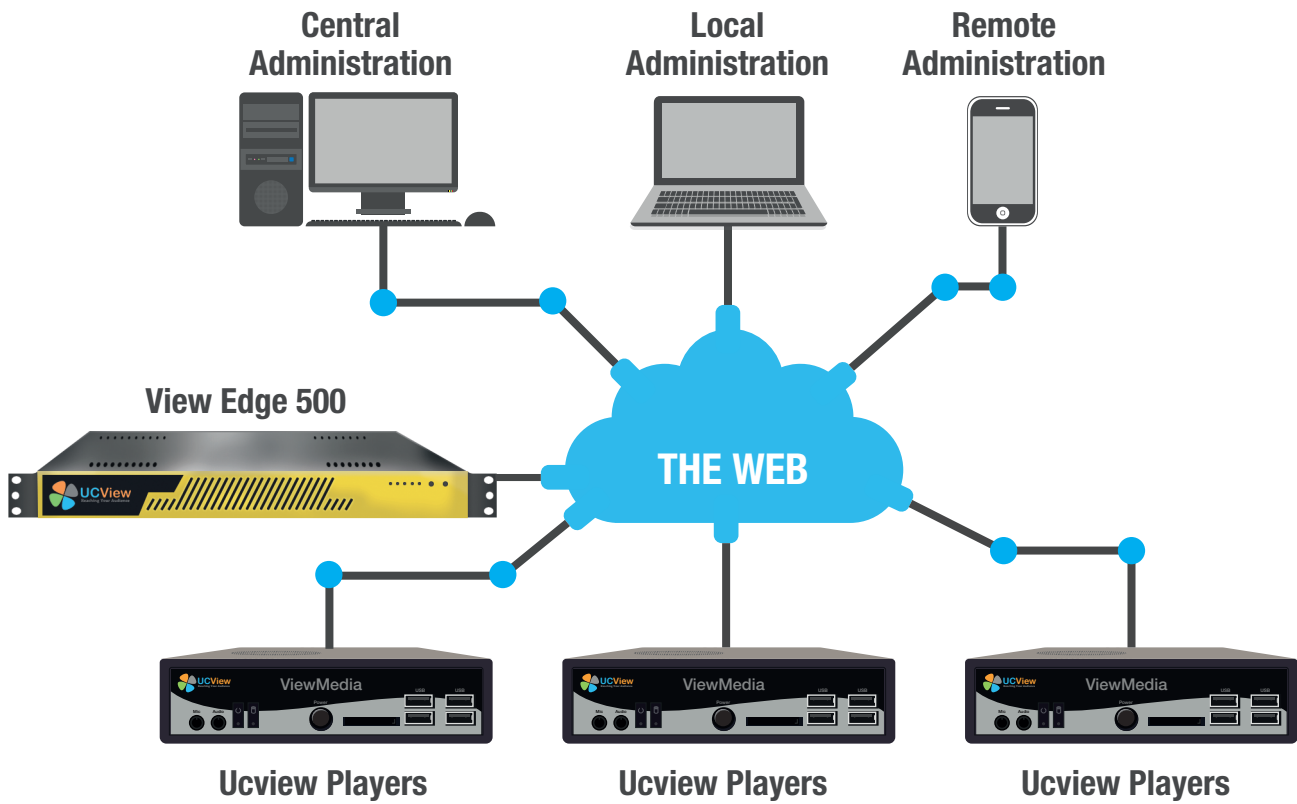
- Connections:
 - 1 VGA Connector
 - 1 Ethernet (10/100/1000)
 - 2 USB
 - 2 PS/2 (Keyboard/Mouse)
- Power Requirements:
 - AC 100-200 Volt
 - 250 W

System Features:

- Administration:
 - Web based interface console for IP management
 - Console for IP management
 - User account administration
 - Reports and statistics
 - Remote display management
 - Display failure notification
 - Secure remote administration
 - Full-user security module

End Users/Advertisers:

- Web-based interface
- Fullcampaign and ad management
- Reports and statistics



UCView
Reaching Your Audience

18425 Napa St
Northridge, CA 91325

Tel: 1-818-772-8255

Toll Free: 1-877-828-4399

Fax: 1-818-772-7901

Email: sales@ucview.com

leah@ucview.com