



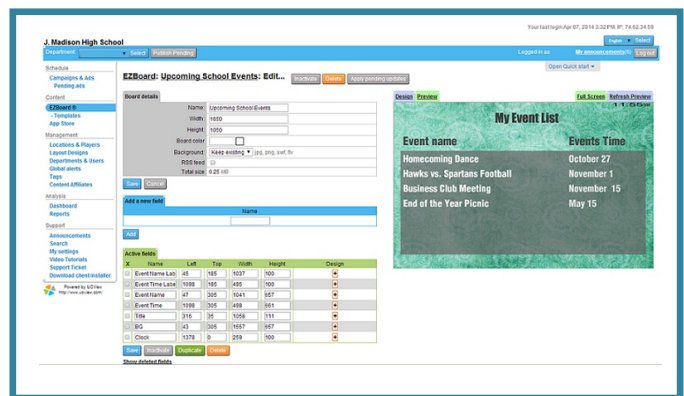
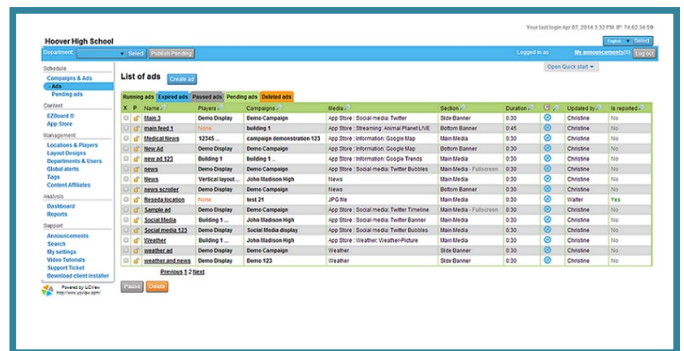
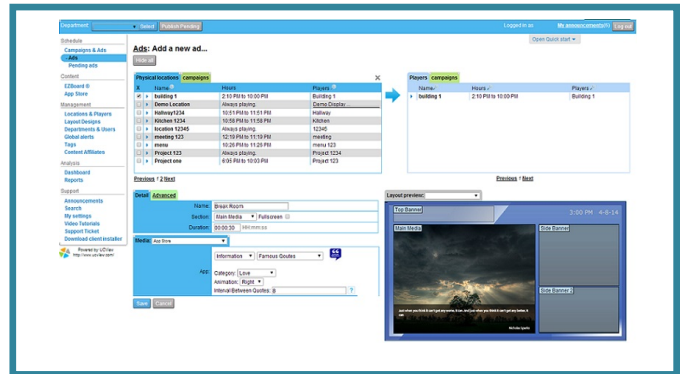
## ViewEdge 100

The ViewEdge 100 digital signage media server is our mid-line, fully integrated hardware and software solution for providing web-based management and media distribution. With complete control of up to 250 media players, the ViewEdge 100 is perfect for a mid-sized single location or several smaller locations.

One digital signage appliance can seamlessly distribute: Live TV, web pages, Flash media, PowerPoint presentations, RSS feeds and multiple video, images, and audio formats.

With no software to install or network modifications to perform, setting up a UCView Digital Signage Media Server is simple and hassle-free.

- One ViewEdge 100 appliance can control as many as 250 media players, operating anywhere in the world.
- Self-contained hardware and software solution that minimizes maintenance and complicated installation/administration issues.
- Compatible with Intranet, Internet, and V-LAN connections.
- Web-based administration: Manage campaigns, content, layouts and displays using any web-enabled device from anywhere in the world.
- Cluster multiple Server Appliances to increase capacity and availability. Installing additional units is as simple as installing the first one.
- Schedule content delivery on the fly or weeks in advance.
- Unlike software-only solutions, the UCView Digital Signage Network increases system performance by centralizing the process and management to multi-user enterprise environments.
- Updates and fixes are delivered automatically with no additional administration.



# ViewEdge 100 - Specifications

## Hardware Specifications:

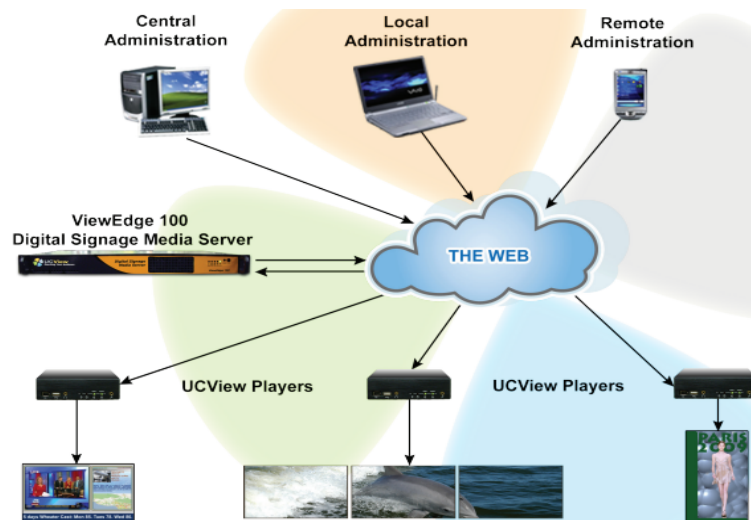
- CPU: 3.0GHz Intel Processor
- Hard Drive: 500GB SATA Hard Drive
- Optional: Raid
- Chipset: LGA1155
- Memory: 4GB DDR3
- Graphics: VGA
- Network: 1 LAN (10/100/1000)
- Interface: Web and Console
- Dimensions: 1 RU, 17" x 11" x 1"
- Typical: 80W Power Supply: 200W

## Hardware Features:

- **Connections:**
  - 1 VGA Connector
  - 1 Ethernet 10/100/1000
  - 2 USB
  - 2 PS/2 (Keyboard/Mouse)
- **Power Requirements:**
  - AC 100-200 Volt

## System Features:

- **Administration:**
  - Web based interface console for IP management
  - Console for IP management
  - User account administration
  - Reports and statistics
  - Remote display management
  - Display failure notification
  - Secure remote administration
  - Full-user security module
- **End Users/Advertisers:**
  - Web-based interface
  - Full campaign and ad management
  - Reports and statistics



## UCView, Inc.

18425 Napa Street  
Northridge, CA 91325  
Office: 818-772-8255  
Fax: 818-772-7901  
[www.ucview.com](http://www.ucview.com)