

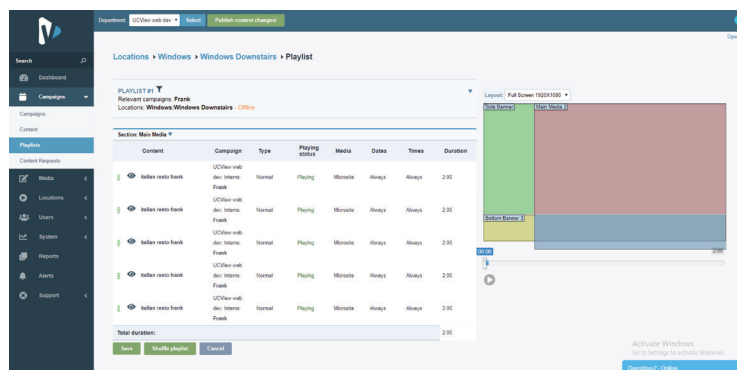
Player Specifications

ViewEdge 100 Server

SPECIFICATIONS:

The ViewEdge 100 digital signage media server is our mid-line, fully integrated hardware and software solution for providing web-based management and media distribution. With complete control of up to 250 media players, the ViewEdge 100 is perfect for a midsized single location or several smaller locations.

One digital signage appliance can seamlessly distribute: Live TV, web pages, Flash media, PowerPoint presentations, RSS feeds and multiple video, images, and audio formats. With no software to install or network modifications to perform, setting up a UCView Digital Signage Media Server is simple and hassle-free.

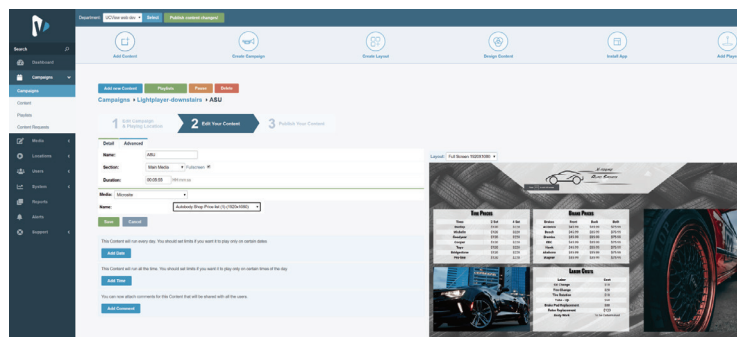


One ViewEdge 100 appliance can control as many as 250 media players, operating anywhere in the world.

Self-contained hardware and software solution that minimizes maintenance and complicated installation/administration issues.

Compatible with Intranet, Internet, and V-LAN connections.

Web-based administration: Manage campaigns, content, layouts and displays using any web-enabled device from anywhere in the world.



Cluster multiple Server Appliances to increase capacity and availability. Installing additional units is as simple as installing the first one.

Schedule content delivery on the fly or weeks in advance.

Unlike software-only solutions, the UCView Digital Signage Network increases system performance by centralizing the process and management to multi-user enterprise environments.

Updates and fixes are delivered automatically with no additional administration.

Player Specifications

ViewEdge 100 Server

SPECIFICATIONS:

Hardware Specifications:

- CPU: 3.0GHz Intel Processor
- Hard Drive: 500GB SATA Hard Drive
- Optional: Raid
- Chipset: LGA1155
- Memory: 4GB DDR3
- Graphics: VGA
- Network: 1 LAN (10/100/1000)
- Interface: Web and Console
- Dimensions: 1 RU, 17" x 11" x 1"
- Typical: 80W Power Supply: 200W

Hardware Features:

- Connections:
 - 1 VGA Connector
 - 1 Ethernet 10/100/1000
 - 2 USB
 - 2 PS/2 (Keyboard/Mouse)
- Power Requirements:
 - AC 100-200 Volt

System Features:

- Administration:
 - Web based interface console for IP management
 - Console for IP management
 - User account administration
 - Reports and statistics
 - Remote display management

• End Users/Advertisers:

- Web-based interface
- Full campaign and ad management
- Reports and statistics



All specifications and photos are subject to change without notice



Player Specifications

ViewEdge 100 Server

SPECIFICATIONS:

